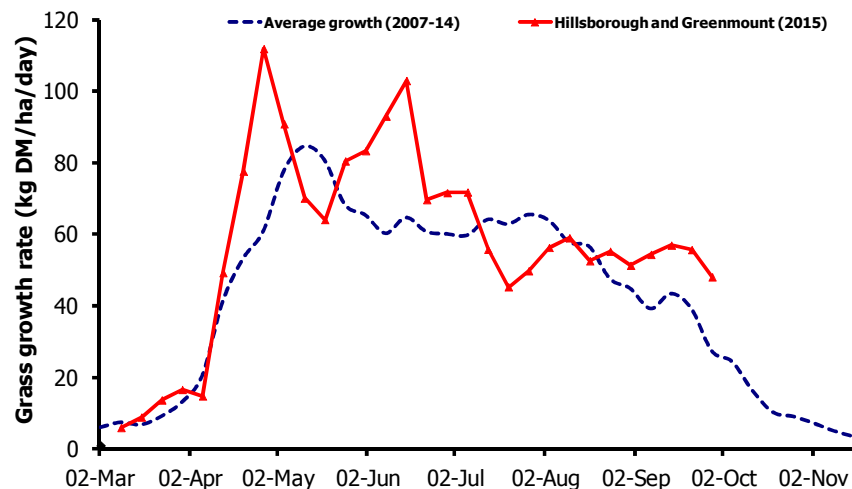


Grass Growth and Quality



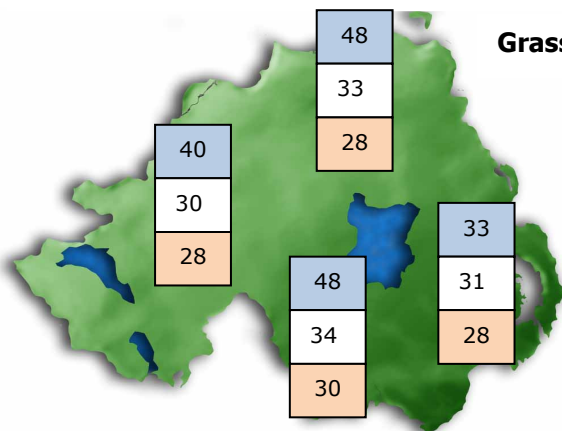
3-week Grass Growth (kg DM/ha/day)*	
Greenmount	48
Hillsborough	48
Downpatrick	30

*270 kg N/ha/year applied

Grass Quality	
Dry matter (%)	15.8
ME (MJ/kg DM)	11.5
Crude protein (%)	20.7
Sugars (% DM)	13.6

Grass growth predictions represent the average daily growth over a 21 day period

Grass Growth Predictions (kg DM/ha/day)



Current
1 week ahead
2 weeks ahead

General comment: Growth remains good in many areas, almost twice the seasonal average at some of the sites. The settled weather has improved opportunities for achieving high grass utilisation as the final grazing rotation commences in early October.

Michael McCaughey manages a herd of 108 New Zealand Friesian and Jersey cross-bred cows on his farm at Trillick in west Tyrone. The herd is compact spring calving. The main aim on the farm is to maximise milk from grazed grass within the constraints of the mixed land quality farmed. The herd has an average annual milk yield of 5,078 litres/cow from a concentrate input of 805 kg (3,289 litres/cow from forage).



Grass supply

Average farm cover	2,190 kg DM/ha
Pre-grazing cover	3,050 kg DM/ha
Current grass growth	78 kg DM/ha/day
Herd grass demand	36 kg DM/ha/day

Grass wedge

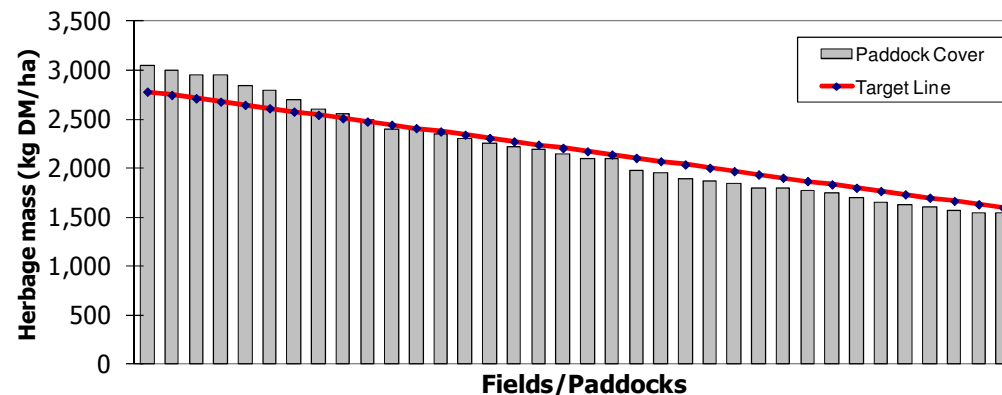
Stocking rate	2.4 cows/ha
Rotation length	35 days
Estimated grass intake	15 kg DM/cow/day
Post-grazing target	1,600 kg DM/ha

Cow performance

Milk yield and quality	17 litres/cow/day, 4.57% BF, 3.62% PR
Concentrate feed level	2.0 kg/cow/day
Milk from forage	12.6 litres/cow/day

Management issues

Favourable ground conditions during September enabled Michael to clean out swards well and produce good quality regrowths. Cows are grazing full time and so far no silage has been fed. The last rotation, which at present is 35 days, has just commenced and should allow grazing until mid November, weather permitting. The farm was blanket spread with 3.75 bags fertiliser/hectare (1.5 bags/acre) at the beginning of September. At present 23m³ slurry/ha (2000gallons/acre) of diluted slurry is being spread after grazing. Due to the loss of some conacre, the in calf heifers were contract reared for the grazing season and have just returned home.



Grass Growth and Quality

Grazing Management Focus