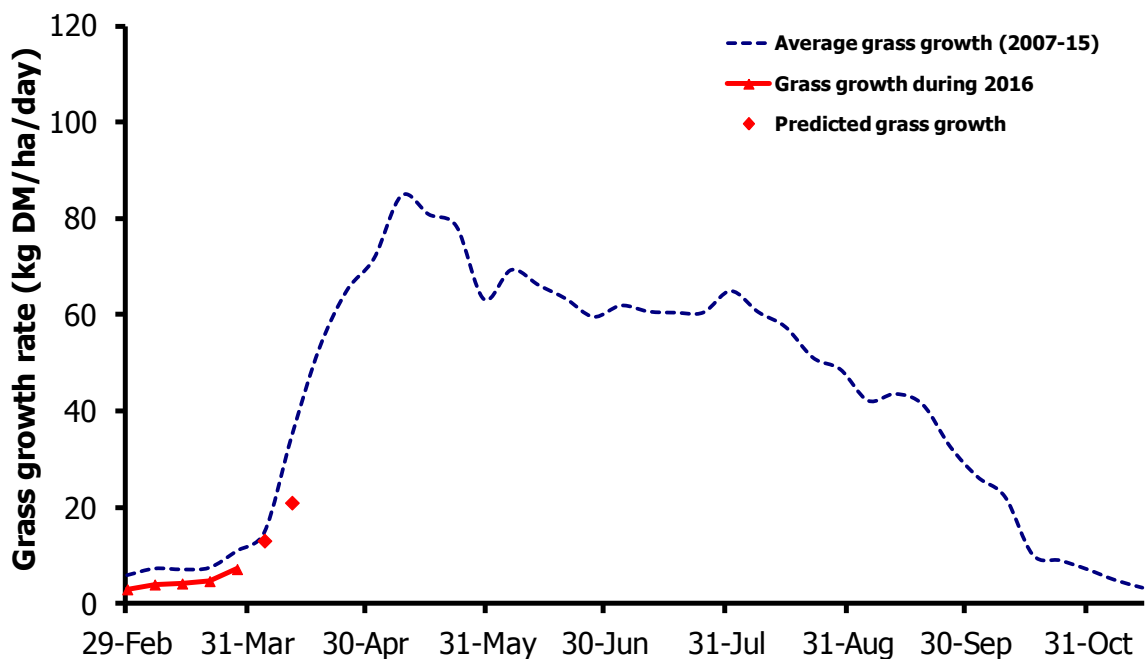


GrassCheck

Week beginning 28 March 2016



Grass growth and quality measured from swards at Hillsborough and Greenmount

Grass Growth (kg DM/ha/day)*		
Previous 3 weeks	28 Mar	7.2
Predicted	4 Apr	13
	11 Apr	21

* 270 kg N/ha/year applied

Grass Quality	
Dry matter (%)	18.9
ME (MJ/kg DM)	12.5
Crude protein (%)	23.5
Sugars (% DM)	14.2

Management notes.

- Cold temperatures continue to keep growth rates low, with growth well below the seasonal average throughout March.
- Unfortunately the cold theme to the weather is forecasted to continue into early April, so whilst growth is increasing, it is likely to remain below the seasonal average.
- The unsettled conditions are also increasing soil moistures, but as we enter April, it is critical that every opportunity to get stock grazing is utilised.
- Using back fences, alternating entry/exit points and grazing for short 2 to 3 hour durations will help, with the potential to graze for short periods after both morning and evening milking as day length increases.