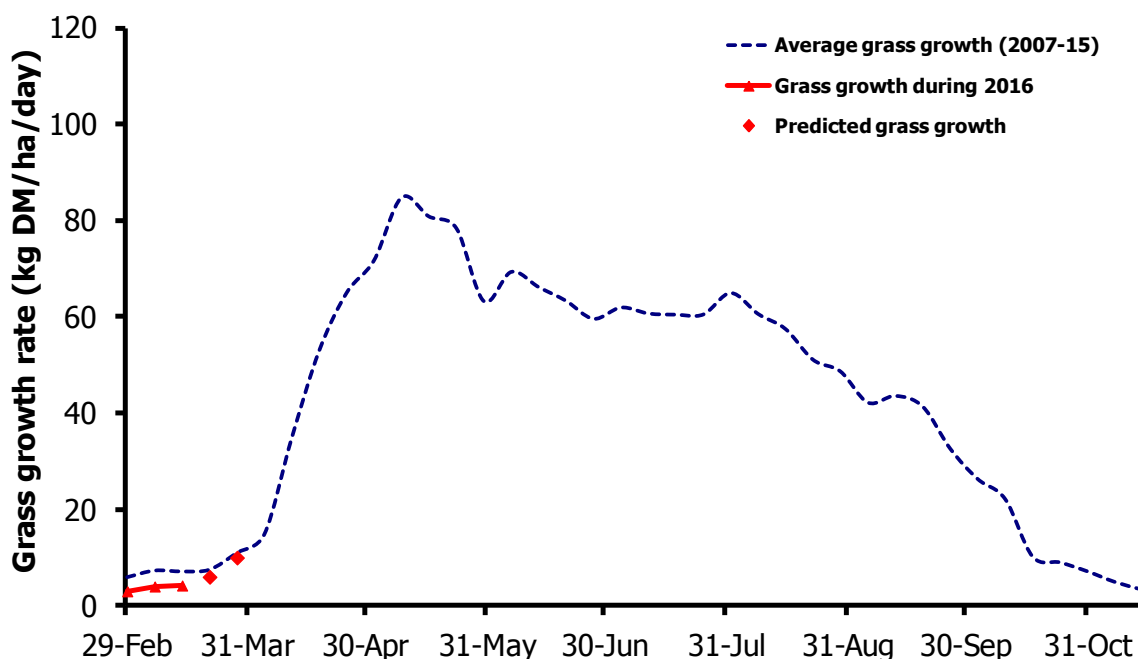


GrassCheck

Week beginning 14 March 2016



Grass growth and quality measured from swards at Hillsborough and Greenmount

Grass Growth (kg DM/ha/day)*		
Previous 3 weeks	14 Mar	4
Predicted	21 Mar	6
	28 Mar	10

* 270 kg N/ha/year applied

Grass Quality	
Dry matter (%)	21.6
ME (MJ/kg DM)	11.5
Crude protein (%)	20.2
Sugars (% DM)	13.9

Management notes.

- Whilst grass covers across most farms are sufficient to allow turnout, difficult ground conditions have restricted grazing opportunities to date this spring
- However, ground conditions can improve very quickly at this time of year, so it is important to react quickly once conditions allow, especially given the settled weather conditions expected through mid-March. Walking fields regularly will allow an assessment of how quickly conditions are changing
- Grazing lighter sward covers initially for a few hours daily will allow the cows to adjust to grazing, with cows ideally turned out with an 'edge' to their appetite
- Using back fences, alternating entry/exit points and grazing square blocks are likely to be strategies needed initially until ground conditions improve.